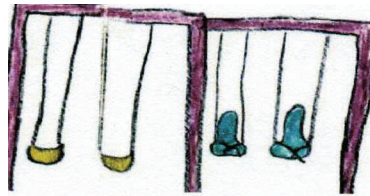
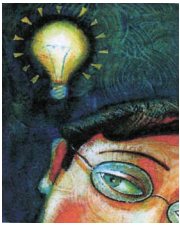


Date: 05/14/09

Time: 6:30 p.m.

Community Playground Planning Meeting



★ **Bring the Whole Family!!**

★ *We need your good ideas
and enthusiasm!*

★ *Hot Dogs, Chips, and Drinks*

★ *6:30 Community Presentation*

★ *7:00 Design Session*

★ *7:45 Wrap Up*

**Where: Bond Mill Elementary
School in the Cafeteria**

Location:

**16001 Sherwood Avenue
Laurel, MD 20707**

*For more information or to help with
Planning Day, contact:*

*Dawn Bell at 301 725 3407 or
Stephanie Brown at 301 890 1670*